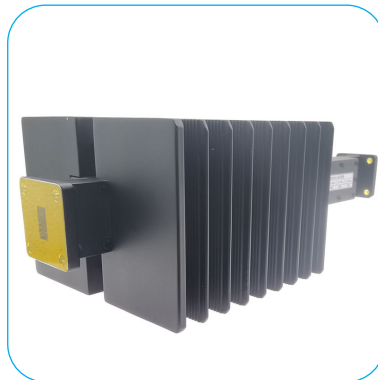
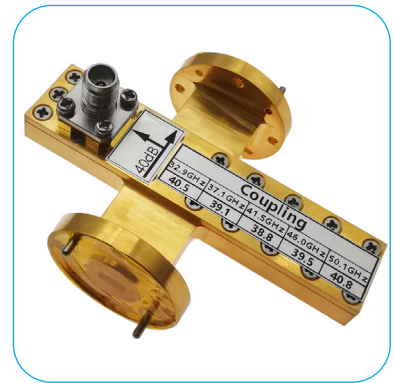
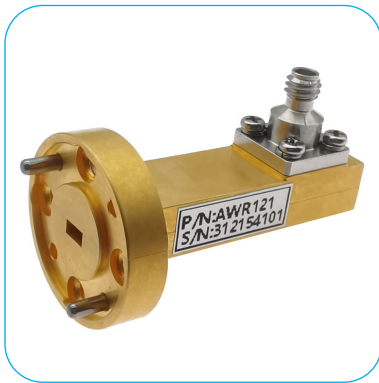


Waveguide Components



Shortform Catalog

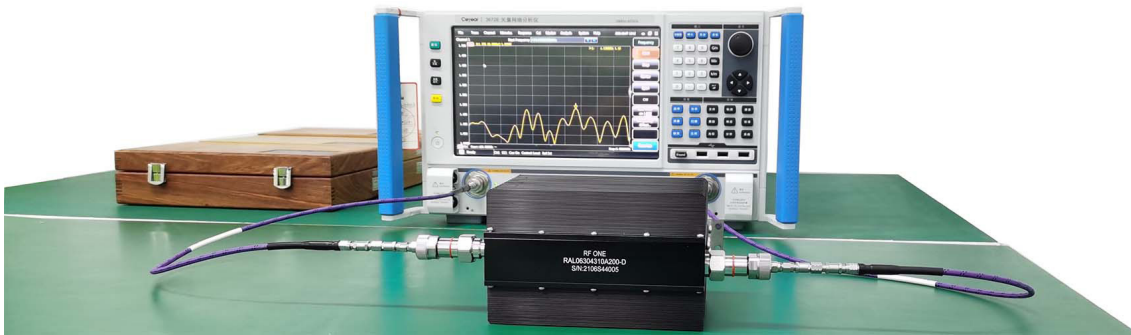


About Us

RF ONE is an **ISO 9001** certified supplier of high quality RF, Microwave and mmWave components from China. Since 2002 we have been dedicated to the design and manufacturing of RF attenuators, terminations and other passive components. As the industry evolved, RF ONE has grown and expanded our lines to keep meeting customer needs. Our products are used widely in commercial, industrial, and military applications including wireless, satellite, defense, test&measurement and many more.

RF ONE has been continuously pursuing improvement and dedicating to product innovation, granted with 13 patents in the range of RF Attenuators, mmWave terminations, low PIM Passive Components etc.

We have established long term solid partnership with worldwide sales representatives and distributors. RF ONE is the approved vendor to **Indra, Viavi Solutions, Teledyne Paradise Datacom** and also is qualified supplier to **ACE Technologies Corp, JCET, Ericsson** and more.



Main categories include:

- Coaxial Fixed Attenuators/Terminations (DC-4GHz through 110GHz, 2W-2kW)
- DC Blocks (9kHz up to 67GHz)
- mmWave Coax Adapters/Connectors(Up to 110GHz)
- Low PIM Components (170dBc Terminations/Attenuators/Cables/Adapters)
- Waveguide Products (Adapters/Attenuators/Terminations/Couplers/Horn Antennas)
- Power Dividers & Coupler & Filters
- Cables and Cable Assemblies (Up to 110GHz)



ISO 9001 Certificate



Part of Patent Certificates

Contents



Waveguide to Coax Adapters
Page 5-8



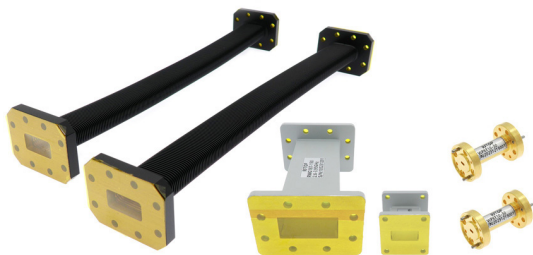
Waveguide Attenuators
Page 9



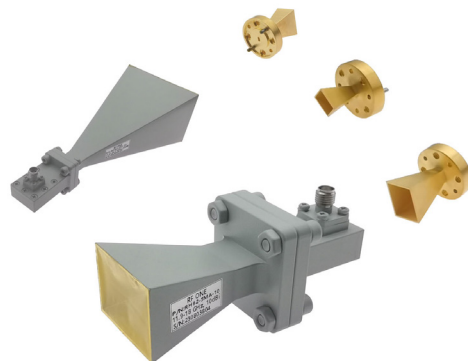
Waveguide Couplers
Page 10-11



Waveguide Terminations
Page 12-16



Waveguide Straight Sections
Page 17-18



Standard Gain Horn Antennas
Page 19-23

RF ONE also offers a wide array of high quality Waveguide Bends, Waveguide Transitions, Waveguide Twists, Waveguide Filters, Waveguide Pressure Windows, Waveguide Power Dividers, Waveguide Switches, Waveguide VNA Calibration Kits etc., please visit our website www.rfone.cn or contact us at sales@rfone.cn.

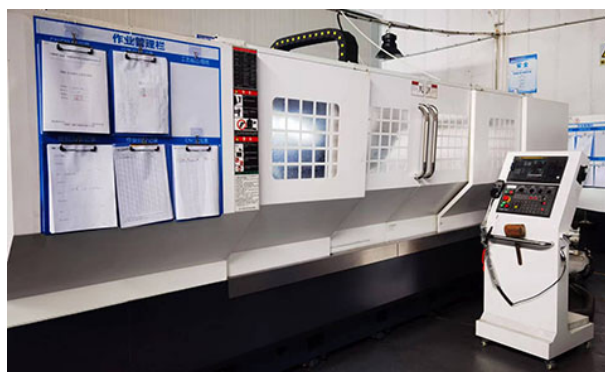
Facility of Waveguide Components

RF ONE is committed to providing high quality and reliable products to our worldwide customers. Our ISO 9001 certified in-house facility is equipped with a range of test and measurement instruments.

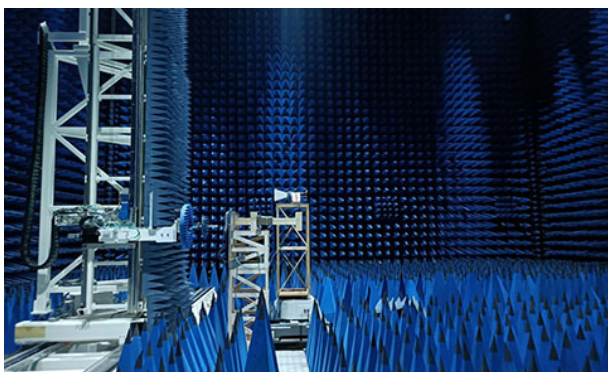
Our manufacture facilities have the full capabilities to fabricate the products either in standard or in custom design, for large production run projects or for small urgent projects. The CNC Center includes 15 sets engraving, milling machines and lathes. Part of the facility photos are presented.



CNC Center



TC3000 Tapping Center



Microwave Anechoic Chamber



10MHz-110GHz VNA

Waveguide to Coax Adapters

- Waveguide covering from WR10 to WR975
- Available in 1.0mm, 1.85mm, 2.4mm, 2.92mm and SMA, N, 3.5mm, TNC & DIN 7/16 connectors
- Connectors are built with ruggedized stainless steel body
- Excellent VSWR, low insertion loss
- No MOQ, short delivery
- 100% RF Test



Waveguide to 1.0mm, 1.85mm, 2.4mm, 2.92mm, WR10 to WR42

Part Number	Waveguide Size	Coaxial	Frequency Range	VSWR	Flange Type	Body Style
			(GHz)	Max		
AWR101A	WR10	1.0mm	73.8-110 GHz	1.4	UG387/U	Right Angle
AWR101EL	WR10	1.0mm	73.8-110 GHz	1.5	UG387/U	End Launch
AWR121	WR12	1.0mm	60.5-91.9 GHz	1.4	UG387/U	Right Angle
AWR121EL	WR12	1.0mm	60.5-91.9 GHz	1.5	UG387/U	End Launch
AWR151	WR15	1.0mm	50-75 GHz	1.38	UG385/U	Right Angle
AWR151EL	WR15	1.0mm	50-75 GHz	1.4	UG385/U	End Launch
AWR15185	WR15	1.85mm	50-70 GHz	1.35	UG385/U	Right Angle
AWR15185EL	WR15	1.85mm	50-70 GHz	1.35	UG385/U	End Launch
AWR19185	WR19	1.85mm	39.2-59.6 GHz	1.35	UG-383/U Mod	Right Angle
AWR19185EL	WR19	1.85mm	39.2-59.6 GHz	1.4	UG-383/U Mod	End Launch
AWR2224	WR22	2.4mm	32.9-50 GHz	1.25	UG-383/U	Right Angle
AWR2224EL	WR22	2.4mm	32.9-50 GHz	1.3	UG-383/U	End Launch
AWR28292	WR28	2.92mm	26.3-40 GHz	1.2	UBR320	Right Angle
AWR28292EL	WR28	2.92mm	26.3-40 GHz	1.2	UBR320	End Launch
AWR34292	WR34	2.92mm	21.7-33 GHz	1.2	UBR260	Right Angle
AWR34292EL	WR34	2.92mm	21.7-33 GHz	1.2	UBR260	End Launch
AWR34292A	WR34	2.92mm	21.7-33 GHz	1.2	UG1530/U	Right Angle
AWR42292	WR42	2.92mm	17.6-26.7 GHz	1.2	UBR220	Right Angle
AWR42292EL	WR42	2.92mm	17.6-26.7 GHz	1.2	UBR220	End Launch
AWR42292A	WR42	2.92mm	17.6-26.7 GHz	1.2	UG595/U	Right Angle
AWR42292EL	WR42	2.92mm	17.6-26.7	1.2	UBR220	End Launch

* All our standard models are not pressure sealed. Grooved flanges are also available upon request.

* This list does not include all our waveguide to coax adapters, contact us at sales@rfone.cn for your specific needs.



AWR101A



AWR101EL



AWR15185



AWR2224



AWR34292A

Waveguide to SMA, N type, TNC, DIN 7/16, WR51 to WR1150

Part Number	Waveguide Size	Coaxial	Freq Range	VSWR	Flange Type	Body Style
			(GHz)	Max		
AWR51SMA	WR51	SMA	14.5-22 GHz	1.2	UBR180	Right Angle
AWR51SMAA	WR51	SMA	14.5-22 GHz	1.2	MIL3922/70	Right Angle
AWR51SMAEL	WR51	SMA	14.5-22 GHz	1.2	UBR180	End Launch
AWR5135	WR51	3.5mm	14.5-22 GHz	1.2	UBR180	Right Angle
AWR62N	WR62	N	11.9-18 GHz	1.2	UBR140	Right Angle
AWR62NEL	WR62	N	11.9-18 GHz	1.2	UBR140	End Launch
AWR62SMA	WR62	SMA	11.9-18 GHz	1.2	UBR140	Right Angle
AWR62SMAEL	WR62	SMA	11.9-18 GHz	1.2	UBR140	End Launch
AWR62292	WR62	2.92mm	11.9-18 GHz	1.2	UBR140	Right Angle
AWR62292EL	WR62	2.92mm	11.9-18 GHz	1.2	UBR140	End Launch
AWR75N	WR75	N	9.84-15 GHz	1.2	UBR120	Right Angle
AWR75NR	WR75	N	9.84-15 GHz	1.2	UDR120	Right Angle
AWR75SMA	WR75	SMA	9.84-15 GHz	1.2	UBR120	Right Angle
AWR75SMAEL	WR75	SMA	9.84-15 GHz	1.2	UBR120	End Launch
AWR75SMAEU	WR75	SMA	9.84-15 GHz	1.2	UDR120	End Launch
AWR75T	WR75	TNC	9.84-15 GHz	1.2	UBR120	Right Angle
AWR90N	WR90	N	8.2-12.5 GHz	1.2	UBR100	Right Angle
AWR90NEL	WR90	N	8.2-12.5 GHz	1.2	UBR100	End Launch
AWR90SMA	WR90	SMA	8.2-12.4 GHz	1.2	UBR100	Right Angle
AWR90SMAEL	WR90	SMA	8.2-12.4 GHz	1.2	UBR100	End Launch
AWR90T	WR90	TNC	8.2-12.5 GHz	1.2	UBR100	Right Angle
AWR102N	WR102	N	7-11 GHz	1.25	UG-1493/U	Right Angle
AWR102SMA	WR102	SMA	7-11 GHz	1.25	UG-1493/U	Right Angle
AWR112SMA	WR112	SMA	6.57-9.9 GHz	1.2	UBR84	Right Angle
AWR112N	WR112	N	6.57-9.9 GHz	1.2	UBR84	Right Angle
AWR112NR	WR112	N	6.57-9.9 GHz	1.2	UDR84	Right Angle
AWR112SMAEL	WR112	SMA	6.57-9.9 GHz	1.2	UBR84	End Launch
AWR112SMAREL	WR112	SMA	6.57-9.9 GHz	1.2	UDR84	End Launch
AWR137N	WR137	N	5.37-8.17 GHz	1.2	UDR70	Right Angle
AWR137NEL	WR137	N	5.37-8.17 GHz	1.25	UDR70	End Launch
AWR137SMA	WR137	SMA	5.37-8.17 GHz	1.2	UDR70	Right Angle
AWR137SMAEL	WR137	SMA	5.37-8.2 GHz	1.2	UDR70	End Launch
AWR159N	WR159	N	4.64-7.05 GHz	1.2	UDR58	Right Angle
AWR159SMA	WR159	SMA	4.64-7.05 GHz	1.2	UDR58	Right Angle
AWR159SMAEL	WR159	SMA	4.64-7.05 GHz	1.2	UDR58	End Launch
AWR187N	WR187	N	3.94-5.99 GHz	1.2	UDR48	Right Angle
AWR187NEL	WR187	N	3.94-5.99 GHz	1.2	UDR48	End Launch
AWR187SMA	WR187	SMA	3.94-5.99 GHz	1.2	UDR48	Right Angle
AWR229N	WR229	N	3.22-4.9 GHz	1.2	UDR40	Right Angle
AWR229SMA	WR229	SMA	3.22-4.9 GHz	1.2	UDR40	Right Angle
AWR284D	WR284	7/16 DIN	2.6-3.95 GHz	1.2	UDR32	Right Angle

→ Continue

Waveguide to SMA, N type, DIN 7/16, WR51 to WR1150

(Continued)

Part Number	Waveguide Size	Coaxial	Freq Range	VSWR	Flange Type	Body Style
			(GHz)	Max		
AWR284DEL	WR284	7/16 DIN	2.6-3.95 GHz	1.2	UDR32	End Launch
AWR284N	WR284	N	2.6-3.95 GHz	1.2	UDR32	Right Angle
AWR284SMA	WR284	SMA	2.6-3.95 GHz	1.2	UDR32	Right Angle
AWR340D	WR340	7/16 DIN	2.17-3.3 GHz	1.2	UDR26	Right Angle
AWR340N	WR340	N	2.17-3.3 GHz	1.2	UDR26	Right Angle
AWR340SMA	WR340	SMA	2.17-3.3 GHz	1.2	UDR26	Right Angle
AWR430N	WR430	N	1.72-2.61 GHz	1.2	UDR22	Right Angle
AWR430SMA	WR430	SMA	1.72-2.61 GHz	1.2	UDR22	Right Angle
AWR510N	WR510	N	1.45-2.2 GHz	1.2	RDR22	Right Angle
AWR650N	WR650	N	1.13-1.73 GHz	1.2	UDR14	Right Angle
AWR650SMA	WR650	SMA	1.13-1.73 GHz	1.2	UDR14	Right Angle
AWR770N	WR770	N	0.96-1.46 GHz	1.2	UDR12	Right Angle
AWR770SMA	WR770	SMA	0.96-1.46 GHz	1.2	UDR12	Right Angle
AWR770D	WR770	7/16 DIN	0.96-1.46 GHz	1.2	UDR12	Right Angle
AWR975D	WR975	7/16 DIN	0.76-1.15 GHz	1.25	UDR9	Right Angle
AWR975N	WR975	N	0.76-1.15 GHz	1.2	UDR9	Right Angle
AWR975SMA	WR975	SMA	0.76-1.15 GHz	1.2	UDR9	Right Angle
AWR1150N	WR1150	N	0.64-0.98 GHz	1.3	UDR8	Right Angle

* All our standard models are not pressure sealed. Grooved flanges are also available upon request.

* This list does not include all our waveguide to coax adapters, contact us at sales@rfone.cn for your specific needs.



AWR51SMA



AWR90SMAEL



AWR137SMA



AWR159N



AWR284DEL

Double Ridge Waveguide to 2.4mm, 2.92mm, SMA, N, TNC, WRD110 to WRD840

Part Number	Waveguide Size	Coaxial	Freq Range	VSWR	Flange Type	Body Style
			(GHz)	Max		
AWRD110SMA	WRD110	SMA	11-26.5 GHz	1.3	FPWRD110	Right Angle
AWRD110SMAEL	WRD110	SMA	11-26.5 GHz	1.3	FPWRD110	End Launch
AWRD18024	WRD180	2.4mm	18-40 GHz	1.5	FPWRD180	Right Angle
AWRD180292	WRD180	2.92mm	18-40 GHz	1.3	FPWRD180	Right Angle
AWRD180292EL	WRD180	2.92mm	18-40 GHz	1.4	FPWRD180	End Launch
AWRD200DHP	WRD200	7/16 DIN	2-4.8 GHz	1.25	FPWRD200	Right Angle
AWRD200N	WRD200	N	2-6 GHz	1.3	FPWRD200	Right Angle
AWRD250N	WRD250	N	2.6-7.8	1.3	FPWRD250	Right Angle
AWRD250NEL	WRD250	N	2.6-7.8	1.3	FPWRD250	End Launch
AWRD350N	WRD350	N	3.5-8.2 GHz	1.3	FPWRD350	Right Angle
AWRD475N	WRD475	N	4.75-11 GHz	1.2	FPWRD475	Right Angle
AWRD500N	WRD500	N	5-18 GHz	1.3	FPWRD500	Right Angle
AWRD500SMA	WRD500	SMA	5-18 GHz	1.3	FPWRD500	Right Angle
AWRD580N	WRD580	N	5.8-16 GHz	1.3	FPWRD580	Right Angle
AWRD580SMA	WRD580	SMA	5.8-16 GHz	1.3	FPWRD580	Right Angle
AWRD580T	WRD580	TNC	5.8-16 GHz	1.3	FPWRD580	Right Angle
AWRD650N	WRD650	N	6.5-18 GHz	1.3	FPWRD650	Right Angle
AWRD650NEL	WRD650	N	6.5-18 GHz	1.3	FPWRD650	End Launch
AWRD650S	WRD650	SMA	6.5-18 GHz	1.25	FPWRD650	Right Angle
AWRD750N	WRD750	N	7.5-18 GHz	1.3	FPWRD750	Right Angle
AWRD750NEL	WRD750	N	7.5-18 GHz	1.3	FPWRD750	End Launch
AWRD750S	WRD750	SMA	7.5-18 GHz	1.25	FPWRD750	Right Angle
AWRD750T	WRD750	TNC	7.5-18 GHz	1.3	FPWRD750	Right Angle
AWRD750TEL	WRD750	TNC	7.5-18 GHz	1.3	FPWRD750	End Launch
AWRD840N	WRD840	N	0.8-2 GHz	1.3	FPWRD840	Right Angle

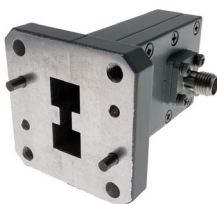
* This list does not include all our double ridge waveguide to coax adapters, contact us at sales@rfone.cn for your specific needs.



AWRD200N



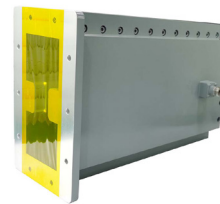
AWRD500N



AWRD580SMA



AWRD750DNL



AWRD840N

Waveguide Attenuators

RF ONE offers a range of waveguide fixed attenuators in WG sizes from WR15 through WR650, in low, medium and high power rates from 1 watts up to 1000 watts. These waveguide attenuators come with standard attenuations from 3 dB to 50 dB, in UG, CPR, UDR, UBR flanges etc, custom flanges are available upon request.



Model Description	<u>WT</u>	<u>XX</u>	<u>XX</u>	<u>(X)</u>	-	<u>XX</u>
		WG Size	Average Power	Flange option		Attenuation
		28=WR28	50=50W	Blank: Cover Flange		06=6dB
		137=WR137	100=100W			30=30dB

Part Number	Waveguide Size	Frequency Range	Attenuation	VSWR
		(GHz)	(dB)	Typical
WT15XX(X)-XX	WR15	50-70	3-50	1.15
WT19XX(X)-XX	WR19	39.2-59.6	3-50	1.15
WT22XX(X)-XX	WR22	32.9-50	3-50	1.15
WT28XX(X)-XX	WR28	26.5-40	3-50	1.15
WT34XX(X)-XX	WR34	21.7-33	3-50	1.15
WT42XX(X)-XX	WR42	17.6-26.7	3-50	1.15
WT51XX(X)-XX	WR51	14.5-22	3-50	1.15
WT62XX(X)-XX	WR62	11.9-18	3-50	1.15
WT75XX(X)-XX	WR75	9.84-15	3-50	1.15
WT90XX(X)-XX	WR90	8.2-12.5	3-50	1.15
WT102XX(X)-XX	WR102	7-11	3-50	1.15
WT112XX(X)-XX	WR112	6.57-9.9	3-50	1.15
WT137XX(X)-XX	WR137	5.37-8.2	3-50	1.15
WT159XX(X)-XX	WR159	4.64-7.05	3-50	1.15
WT187XX(X)-XX	WR187	3.94-5.99	3-50	1.15
WT229XX(X)-XX	WR229	3.22-4.9	3-50	1.15
WT284XX(X)-XX	WR284	2.6-3.95	3-50	1.15
WT340XX(X)-XX	WR340	2.17-3.3	3-50	1.15
WT430XX(X)-XX	WR430	1.72-2.61	3-50	1.15
WT510XX(X)-XX	WR510	1.45-2.2	3-50	1.15
WT650XX(X)-XX	WR650	1.13-1.73	3-50	1.15

* This list does not include all our waveguide attenuators, contact us at sales@rfone.cn for your specific needs.

Waveguide Couplers

RF ONE provides various types of waveguide couplers for power monitoring and system control use, including broadwall directional couplers, dual arm directional couplers, crossguide couplers, loop couplers, power samplers etc.

Waveguide Broadwall Directional Couplers



WDC19-40 WR19, Broadwall, 3 WG Port

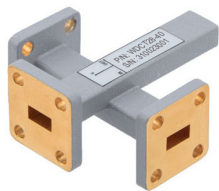


WDC28292F-30 WR28, Broadwall, 2 WG Port and 1 Coax Port

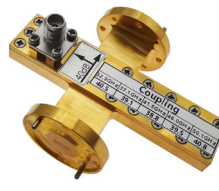
Model Description	<u>WDC</u>	<u>XX</u>	<u>(XX)</u>	-	<u>XX</u>
		WG Size 28=WR28 137=WR137	Coupling port option Blank: Cover Flange NF= N female etc		Coupling 06=6dB 30=30dB

Part Number	Waveguide Size	Freq Range	Coupling	VSWR Max	VSWR Max	Coupling Port
		(GHz)	(GHz)	Main Line	Secondary Line	
WDC15(XX)-XX	WR15	50-70	3-60	1.1	1.25	Waveguide or Coaxial
WDC19(XX)-XX	WR19	39.2-59.6	3-60	1.1	1.25	Waveguide or Coaxial
WDC22(XX)-XX	WR22	32.9-50	3-60	1.1	1.25	Waveguide or Coaxial
WDC28(XX)-XX	WR28	26.5-40	3-60	1.1	1.25	Waveguide or Coaxial
WDC34(XX)-XX	WR34	21.7-33	3-60	1.1	1.25	Waveguide or Coaxial
WDC42(XX)-XX	WR42	17.6-26.7	3-60	1.1	1.25	Waveguide or Coaxial
WDC51(XX)-XX	WR51	14.5-22	3-60	1.1	1.25	Waveguide or Coaxial
WDC62(XX)-XX	WR62	11.9-18	3-60	1.1	1.25	Waveguide or Coaxial
WDC75(XX)-XX	WR75	9.84-15	3-60	1.1	1.25	Waveguide or Coaxial
WDC90(XX)-XX	WR90	8.2-12.5	3-60	1.1	1.25	Waveguide or Coaxial
WDC102(XX)-XX	WR102	7-11	3-60	1.1	1.25	Waveguide or Coaxial
WDC112(XX)-XX	WR112	6.57-9.9	3-60	1.1	1.25	Waveguide or Coaxial
WDC137(XX)-XX	WR137	5.37-8.2	3-60	1.1	1.25	Waveguide or Coaxial
WDC159(XX)-XX	WR159	4.64-7.05	3-60	1.1	1.25	Waveguide or Coaxial
WDC187(XX)-XX	WR187	3.94-5.99	3-60	1.1	1.25	Waveguide or Coaxial
WDC229(XX)-XX	WR229	3.22-4.9	3-60	1.1	1.25	Waveguide or Coaxial
WDC284(XX)-XX	WR284	2.6-3.95	3-60	1.1	1.25	Waveguide or Coaxial
WDC340(XX)-XX	WR340	2.17-3.3	3-60	1.1	1.25	Waveguide or Coaxial
WDC430(XX)-XX	WR430	1.72-2.61	3-60	1.1	1.25	Waveguide or Coaxial
WDC510(XX)-XX	WR510	1.45-2.2	3-60	1.1	1.25	Waveguide or Coaxial
WDC650(XX)-XX	WR650	1.13-1.73	3-60	1.1	1.25	Waveguide or Coaxial

Waveguide Crossguide Directional Couplers



WDCT28-40 WR19, Crossguide, 3 WG Port



WDCT22185F-40 WR22, Crossguide, 2 WG Port and 1 Coax Port

Model Description	<u>WDCT</u>	<u>XX</u>	<u>(XX)</u>	-	<u>XX</u>
		WG Size	Coupling port option		Coupling
		28=WR28	Blank: Cover Flange		06=6dB
		137=WR137	NF= N female		30=30dB
			etc		

Part Number	Waveguide Size	Freq Range	Coupling	VSWR Max	VSWR Max	Coupling Port
		(GHz)	(GHz)	Main Line	Secondary Line	
WDCT15(XX)-XX	WR15	50-70	3-60	1.1	1.3	Waveguide or Coaxial
WDCT19(XX)-XX	WR19	39.2-59.6	3-60	1.1	1.3	Waveguide or Coaxial
WDCT22(XX)-XX	WR22	32.9-50	3-60	1.1	1.3	Waveguide or Coaxial
WDCT28(XX)-XX	WR28	26.5-40	3-60	1.1	1.3	Waveguide or Coaxial
WDCT34(XX)-XX	WR34	21.7-33	3-60	1.1	1.3	Waveguide or Coaxial
WDCT42(XX)-XX	WR42	17.6-26.7	3-60	1.1	1.3	Waveguide or Coaxial
WDCT51(XX)-XX	WR51	14.5-22	3-60	1.1	1.3	Waveguide or Coaxial
WDCT62(XX)-XX	WR62	11.9-18	3-60	1.1	1.3	Waveguide or Coaxial
WDCT75(XX)-XX	WR75	9.84-15	3-60	1.1	1.3	Waveguide or Coaxial
WDCT90(XX)-XX	WR90	8.2-12.5	3-60	1.1	1.3	Waveguide or Coaxial
WDCT102(XX)-XX	WR102	7-11	3-60	1.1	1.3	Waveguide or Coaxial
WDCT112(XX)-XX	WR112	6.57-9.9	3-60	1.1	1.3	Waveguide or Coaxial
WDCT137(XX)-XX	WR137	5.37-8.2	3-60	1.1	1.3	Waveguide or Coaxial
WDCT159(XX)-XX	WR159	4.64-7.05	3-60	1.1	1.3	Waveguide or Coaxial
WDCT187(XX)-XX	WR187	3.94-5.99	3-60	1.1	1.3	Waveguide or Coaxial
WDCT229(XX)-XX	WR229	3.22-4.9	3-60	1.1	1.3	Waveguide or Coaxial
WDCT284(XX)-XX	WR284	2.6-3.95	3-60	1.1	1.3	Waveguide or Coaxial
WDCT340(XX)-XX	WR340	2.17-3.3	3-60	1.1	1.3	Waveguide or Coaxial
WDCT430(XX)-XX	WR430	1.72-2.61	3-60	1.1	1.3	Waveguide or Coaxial
WDCT510(XX)-XX	WR510	1.45-2.2	3-60	1.1	1.3	Waveguide or Coaxial
WDCT650(XX)-XX	WR650	1.13-1.73	3-60	1.1	1.3	Waveguide or Coaxial

* This list does not include all our waveguide couplers, contact us at sales@rfone.cn for your specific needs.

Waveguide Terminations

RF ONE offers a complete line of waveguide termination loads covering the waveguide sizes WR10 to WR650 with all power levels.

Low Power Low VSWR Series

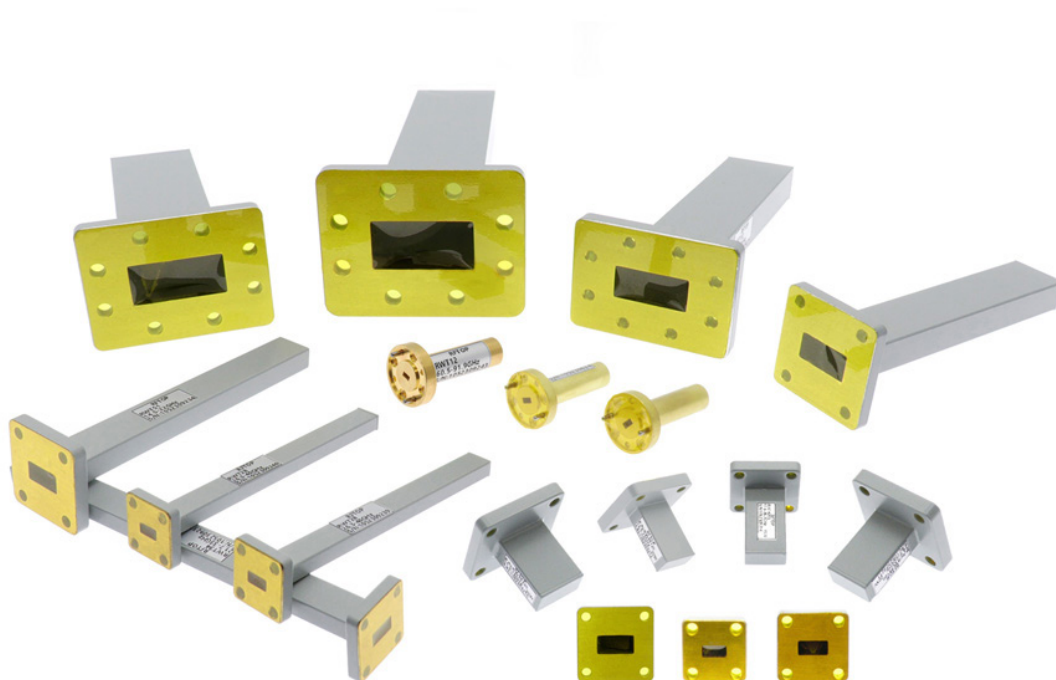
Low VSWR precision waveguide loads are designed to absorb power with high isolation and prevent RF signals reflecting back from open-ended waveguide ports, leaving little or no reflection. These matched terminations are useful for VSWR measurement of various waveguide components as precise reference loads.

Low Power Small Size Series

These small sized waveguide loads are provided as a short and inexpensive terminations with VSWR 1.2 max.

Medium and High Power Waveguide Terminations

Medium and high power waveguide termination loads from RF ONE are manufactured with heat sink fins and in special silicon carbide absorbing material. These termination loads offer less than 1.2 VSWR over full waveguide bandwidth.



Low Power Low VSWR Series



WT19A



WT28A

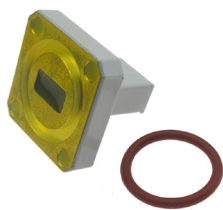


WT229A

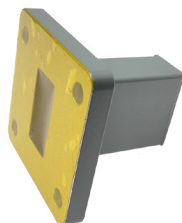
Part Number	Waveguide Size	Freq Range	Average Power	VSWR	Flange Type
		(GHz)	(Watts)	Max	
WT10A	WR10	75-110	0.5	1.05	UG387/U
WT12A	WR12	60.5-91.9	0.5	1.05	UG387/U
WT15A	WR15	50-70	0.5	1.05	UG385/U
WT19A	WR19	39.2-59.6	0.5	1.05	UG383/U-Mod
WT22A	WR22	32.9-50.1	0.5	1.05	UG383/U
WT28A	WR28	26.3-40.0	0.5	1.05	UBR320
WT34A	WR34	21.7-33.0	0.5	1.05	UBR260
WT42A	WR42	17.6-26.7	0.5	1.05	UBR220
WT51A	WR51	14.5-22.0	1	1.05	MIL3922/70
WT51B	WR51	14.5-22.0	1	1.05	UBR180
WT62A	WR62	11.9-18.0	1.5	1.03	UBR140
WT75A	WR75	9.84-15.0	2	1.05	UBR120
WT90A	WR90	8.20-12.5	4	1.03	UBR100
WT112A	WR112	6.57-9.99	4	1.03	UDR84
WT137A	WR137	5.38-8.17	6	1.03	UDR70
WT159A	WR159	4.64-7.05	7	1.03	UDR58
WT187A	WR187	3.94-5.99	8	1.03	UDR48
WT229A	WR229	3.22-4.90	10	1.03	UDR40
WT284A	WR284	2.60-3.95	10	1.03	UDR32
WT340A	WR340	2.17-3.30	12	1.03	UDR26
WT430A	WR430	1.72-2.61	15	1.03	UDR22
WT510A	WR510	1.45-2.2	25	1.03	UDR18
WT650A	WR650	1.13-1.73	25	1.03	UDR14

* This list does not include all our waveguide terminations, contact us at sales@rfone.cn for your specific needs.

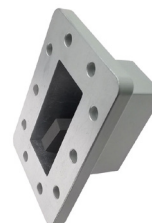
Low Power Small Size Series



WT28SG



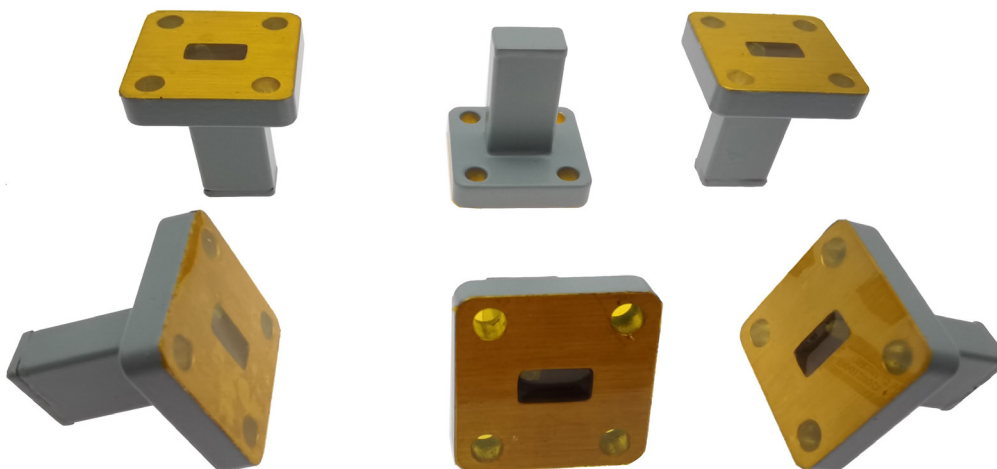
WT75S



WT229S

Part Number	Waveguide Size	Freq Range	Average Power	VSWR	Flange Type
		(GHz)	(Watts)	Max	
WT28S	WR28	26.3-40.0	15	1.2	UBR320
WT28SG	WR28	26.3-40.0	15	1.2	PBR320
WT34S	WR34	21.7-33.0	15	1.2	UG1530/U
WT34SG	WR34	21.7-33.0	15	1.2	UG1530/U-Mod
WT42S	WR42	17.6-26.7	15	1.2	UBR220
WT51S	WR51	14.5-22.0	20	1.2	MIL3922/70
WT51SG	WR51	14.5-22.0	20	1.2	PBR180
WT51L	WR51	14.5-22.0	20	1.2	UBR180
WT62S	WR62	11.9-18.0	20	1.2	UBR140
WT75S	WR75	9.84-15.0	20	1.2	UBR120
WT90S	WR90	8.20-12.5	20	1.2	UBR100
WT112S	WR112	6.57-9.99	30	1.2	UDR84
WT137S	WR137	5.38-8.17	30	1.2	UDR70
WT229S	WR229	3.22-4.90	30	1.2	UDR40

* This list does not include all our waveguide terminations, contact us at sales@rfone.cn for your specific needs.



Medium and High Power Waveguide Terminations



WT19A



WT28A



WT229A

Part Number	Waveguide Size	Freq Range	Average Power	VSWR	Flange Type
		(GHz)	(Watts)	Max	
WT19A50	WR19	39.2-59.6	50	1.2	UG383/U-Mod
WT19A1500	WR19	39.2-59.6	1500	1.2	UG383/U-Mod
WT22A50	WR22	32.9-50.1	50	1.2	UG383/U
WT22A1500	WR22	32.9-50.1	1500	1.2	UG383/U
WT28A50	WR28	26.3-40.0	50	1.2	UBR320
WT28A100	WR28	26.3-40.0	100	1.2	UBR320
WT28A250	WR28	26.3-40.0	250	1.2	UBR320
WT28A600	WR28	26.3-40.0	600	1.15	UBR320
WT28A1000	WR28	26.3-40.0	1000	1.2	UG599/U
WT28A2500	WR28	26.3-40.0	2500	1.15	UBR320
WT34A100	WR34	21.7-33.0	100	1.2	UBR260
WT34A1000	WR34	21.7-33.0	1000	1.2	UG1530/U
WT34A2500	WR34	21.7-33.0	2500	1.15	UBR260
WT42A100	WR42	17.6-26.7	100	1.2	UBR220
WT42A2500	WR42	17.6-26.7	2500	1.15	UBR220
WT51A100	WR51	14.5-22.0	100	1.2	UBR180
WT51B2500	WR51	14.5-22.0	2500	1.2	MIL3922/70
WT62A100	WR62	12-18.0	100	1.15	UBR140
WT62A1000	WR62	11.9-18.0	1000	1.2	UBR140
WT62A2500	WR62	11.9-18.0	2500	1.15	UBR140
WT75A100	WR75	9.84-15.0	100	1.2	UBR120
WT75A150	WR75	9.84-15.0	150	1.2	UBR120
WT75A200	WR75	9.84-15.0	200	1.2	UBR120
WT75A250	WR75	9.84-15.0	250	1.2	UBR120
WT75A2500	WR75	9.84-15.0	2500	1.2	UBR120
WT90A100	WR90	8.20-12.5	100	1.2	UBR100
WT90A500	WR90	8.20-12.4	500	1.15	UBR100
WT90A750	WR90	8.20-12.5	750	1.2	UBR100
WT90A1000	WR90	8.20-12.4	1000	1.2	UBR100
WT90A2500	WR90	8.20-12.5	2500	1.2	UBR100
WT112A150	WR112	6.57-9.99	150	1.2	UDR84

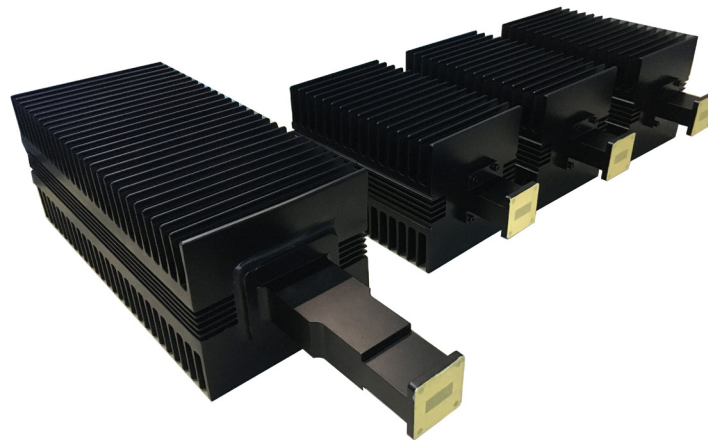
→ Continue

Medium and High Power Waveguide Terminations

(Continued)

Part Number	Waveguide Size	Freq Range	Average Power	VSWR	Flange Type
		(GHz)	(Watts)	Max	
WT112A600	WR112	6.57-9.99	600	1.2	UDR84
WT112A2500	WR112	6.57-9.99	2500	1.2	UDR84
WT137A150	WR137	5.38-8.17	150	1.2	UDR70
WT137A200	WR137	5.38-8.17	200	1.2	UDR70
WT137A250	WR137	5.38-8.17	250	1.2	UDR70
WT137A500	WR137	5.38-8.17	500	1.2	UDR70
WT137A2500	WR137	5.38-8.17	2500	1.2	UDR70
WT159A300	WR159	4.64-7.05	300	1.2	UDR58
WT159A1000	WR159	4.64-7.05	1000	1.2	UDR58
WT159A2500	WR159	4.64-7.05	2500	1.2	UDR58
WT187A300	WR187	3.94-5.99	500	1.2	UDR48
WT187A2500	WR187	3.94-5.99	2500	1.2	UDR48
WT229A300	WR229	3.22-4.90	300	1.2	UDR40
WT229A2500	WR229	3.22-4.90	2500	1.2	UDR40
WT284A200	WR284	2.60-3.95	200	1.2	UDR32
WT284A500	WR284	2.60-3.95	500	1.2	UDR32
WT284A2500	WR284	2.60-3.95	2500	1.2	UDR32
WT284A4500	WR284	2.60-3.95	4500	1.2	UDR32
WT340A500	WR340	2.17-3.30	500	1.2	UDR26
WT340A1000	WR340	2.17-3.30	1000	1.2	UDR26
WT430A500	WR430	1.72-2.61	500	1.2	UDR22
WT430A1000	WR430	1.72-2.61	1000	1.2	UDR22

* This list does not include all our waveguide terminations, contact us at sales@rfone.cn for your specific needs.



Waveguide Straight Sections

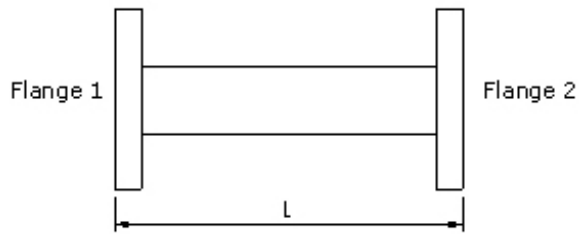
RF ONE offers a complete line of waveguide straight sections covering the waveguide sizes WR3 to WR1150. Our waveguide straight sections are built with precision machining and treatment of low insertion loss and high corrosion resistance.

Features

- Waveguide straight section sizes from WR-3 to WR-1150
- Typical VSWR as low as 1.03
- Numerous Flange Configurations available
- Custom lengths available



Waveguide Straight Sections



Part Number	Waveguide Size	Freq Range	VSWR	Flange Type
		(GHz)	Max	
WS3-L	WR3	217-330	1.2	UG-387/U Mod
WS4-L	WR4	172-261	1.2	UG-387/U Mod
WS5-L	WR5	145-220	1.2	UG-387/U Mod
WS6-L	WR7	113-173	1.15	UG-387/U Mod
WS8-L	WR8	92.2-140	1.15	UG-387/U Mod
WS10-L	WR10	73.8-112	1.15	UG-387/U Mod
WS12-L	WR12	60.5-91.9	1.15	UG-387/U
WS15-L	WR15	49.8-75.8	1.1	UG-385/U
WS19-L	WR19	39.2-59.6	1.1	UG-383/U Mod
WS22-L	WR22	32.9-50.1	1.1	UG-383/U
WS28-L	WR28	26.3-40.0	1.05	UBR320
WS34-L	WR34	21.7-33.0	1.05	UBR260
WS34A-L	WR34	21.7-33.0	1.05	UG-1530/U
WS42-L	WR42	17.6-26.7	1.05	UBR220
WS51-L	WR51	14.5-22.0	1.05	UBR180
WS51A-L	WR51	14.5-22.0	1.05	MIL3922/70
WS62-L	WR62	11.9-18.0	1.05	UBR140
WS75-L	WR75	9.84-15.0	1.05	UBR120
WS90-L	WR90	8.20-12.5	1.05	UBR100
WS112-L	WR112	6.57-9.99	1.05	UBR84
WS137-L	WR137	5.38-8.17	1.05	UDR70
WS159-L	WR159	4.64-7.05	1.05	UDR58
WS187-L	WR187	3.94-5.99	1.05	UDR48
WS229-L	WR229	3.22-4.90	1.05	UDR40
WS284-L	WR284	2.60-3.95	1.05	UDR32
WS340-L	WR340	2.17-3.30	1.05	UDR26
WS430-L	WR430	1.72-2.61	1.05	UDR22
WS510-L	WR510	1.45-2.2	1.05	UDR18
WS650-L	WR650	1.13-1.73	1.05	UDR14
WS770-L	WR770	0.96-1.46	1.05	UDR12
WS975-L	WR975	0.76-1.15	1.05	UDR9
WS1150-L	WR1150	0.64-0.98	1.05	UDR8

* This list does not include all our waveguide straight sections, contact us at sales@rfone.cn for your specific needs.

Standard Gain Horn Antennas

RF ONE offers a complete line of high quality standard gain horn antennas covering the waveguide sizes WR10 to WR284. These standard gain horn antennas are linearly polarized and provide an efficient low cost means of measurements, ideally for EMI testing, direction finding, surveillance, antenna gain and pattern measurements and other applications.

The horn antenna models listed below are the most common gain values available, typically 10 dB, 15 dB, 20dB, and 25 dB gain horn antenna.

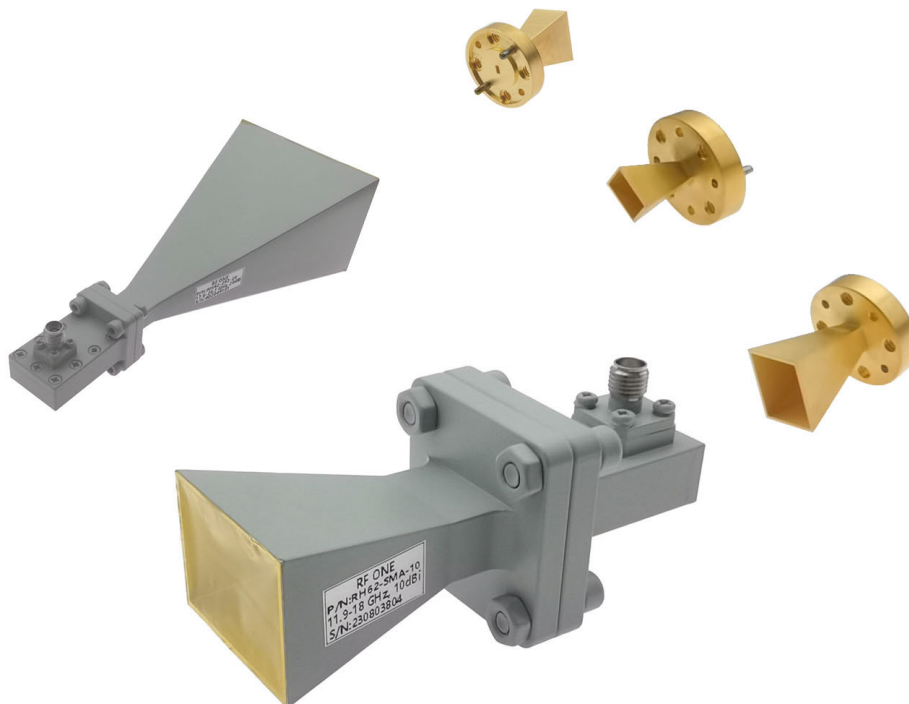
Our Standard gain horn antennas can be ordered with waveguide flange, or can be built with a waveguide to coax adapter.

Waveguide Standard Gain Horn Antennas

The input port is standard waveguide flange, max power is equal to the max power of the input waveguide size.

Standard Gain Horn Antennas with Coax Adapter

The horn is integrated with a waveguide to coax adapter, the max power rating is limited by the coax port.



Waveguide Standard Gain Horn Antennas



Part Number	Waveguide Size	Freq Range	Gain	VSWR	Flange Type	RF Port
		(GHz)	(dBi)	Max		
RH10-15	WR10	73.8-110	15	1.2	UG387/U-Mod	Waveguide Flange
RH10-20	WR10	73.8-110	20	1.2	UG387/U-Mod	Waveguide Flange
RH10-25	WR10	73.8-110	25	1.2	UG387/U-Mod	Waveguide Flange
RH12-10	WR12	60.5-91.9	10	1.25	UG387/U-Mod	Waveguide Flange
RH12-15	WR12	60.5-91.9	15	1.2	UG387/U-Mod	Waveguide Flange
RH12-20	WR12	60.5-91.9	20	1.2	UG387/U-Mod	Waveguide Flange
RH12-25	WR12	60.5-91.9	25	1.2	UG387/U-Mod	Waveguide Flange
RH15-10	WR15	49.8-75.8	10	1.25	UG385/U	Waveguide Flange
RH15-15	WR15	49.8-75.8	15	1.2	UG385/U	Waveguide Flange
RH15-20	WR15	49.8-75.8	20	1.2	UG385/U	Waveguide Flange
RH15-25	WR15	49.8-75.8	25	1.2	UG385/U	Waveguide Flange
RH19-10	WR19	39.2-59.6	10	1.25	UG383/U-Mod	Waveguide Flange
RH19-15	WR19	39.2-59.6	15	1.2	UG383/U-Mod	Waveguide Flange
RH19-20	WR19	39.2-59.6	20	1.2	UG383/U-Mod	Waveguide Flange
RH19-25	WR19	39.2-59.6	25	1.2	UG383/U-Mod	Waveguide Flange
RH22-10	WR22	32.9-50.1	10	1.25	UG383/U	Waveguide Flange
RH22-15	WR22	32.9-50.1	15	1.2	UG383/U	Waveguide Flange
RH22-20	WR22	32.9-50.1	20	1.2	UG383/U	Waveguide Flange
RH22-25	WR22	32.9-50.1	25	1.2	UG383/U	Waveguide Flange
RH28-10	WR28	26.3-40	10	1.25	UBR320	Waveguide Flange
RH28-15	WR28	26.3-40	15	1.2	UBR320	Waveguide Flange
RH28-20	WR28	26.3-40	20	1.2	UBR320	Waveguide Flange
RH28-25	WR28	26.3-40	25	1.2	UBR320	Waveguide Flange
RH34-10	WR34	21.7-33	10	1.25	UBR260	Waveguide Flange
RH34-15	WR34	21.7-33	15	1.2	UBR260	Waveguide Flange
RH34-20	WR34	21.7-33	20	1.2	UBR260	Waveguide Flange
RH34-25	WR34	21.7-33	25	1.2	UBR260	Waveguide Flange
RH42-10	WR42	17.6-26.7	10	1.25	UBR220	Waveguide Flange
RH42-15	WR42	17.6-26.7	15	1.2	UBR220	Waveguide Flange
RH42-20	WR42	17.6-26.7	20	1.2	UBR220	Waveguide Flange
RH42-25	WR42	17.6-26.7	25	1.2	UBR220	Waveguide Flange

→ Continue

Waveguide Standard Gain Horn Antennas

(Continued)

Part Number	Waveguide Size	Freq Range	Gain	VSWR	Flange Type	RF Port
		(GHz)	(dBi)	Max		
RH51-10	WR51	14.5-22	10	1.25	UBR180	Waveguide Flange
RH51-15	WR51	14.5-22	15	1.2	UBR180	Waveguide Flange
RH51-20	WR51	14.5-22	20	1.2	UBR180	Waveguide Flange
RH51-25	WR51	14.5-22	25	1.2	UBR180	Waveguide Flange
RH62-10	WR62	11.9-18	10	1.25	UBR140	Waveguide Flange
RH62-15	WR62	11.9-18	15	1.2	UBR140	Waveguide Flange
RH62-20	WR62	11.9-18	20	1.2	UBR140	Waveguide Flange
RH62-25	WR62	11.9-18	25	1.2	UBR140	Waveguide Flange
RH75-10	WR75	9.84-15	10	1.25	UBR120	Waveguide Flange
RH75-15	WR75	9.84-15	15	1.2	UBR120	Waveguide Flange
RH75-20	WR75	9.84-15	20	1.2	UBR120	Waveguide Flange
RH75-25	WR75	9.84-15	25	1.2	UBR120	Waveguide Flange
RH90-10	WR90	8.2-12.5	10	1.25	UBR100	Waveguide Flange
RH90-15	WR90	8.2-12.5	15	1.2	UBR100	Waveguide Flange
RH90-20	WR90	8.2-12.5	20	1.2	UBR100	Waveguide Flange
RH90-25	WR90	8.2-12.5	25	1.2	UBR100	Waveguide Flange
RH112-10	WR112	6.57-9.99	10	1.25	UBR84	Waveguide Flange
RH112-15	WR112	6.57-9.99	15	1.2	UBR84	Waveguide Flange
RH112-20	WR112	6.57-9.99	20	1.2	UBR84	Waveguide Flange
RH137-10	WR137	5.38-8.17	10	1.25	UDR70	Waveguide Flange
RH137-15	WR137	5.38-8.17	15	1.2	UDR70	Waveguide Flange
RH137-20	WR137	5.38-8.17	20	1.2	UDR70	Waveguide Flange
RH159-10	WR159	4.64-7.05	10	1.25	UDR58	Waveguide Flange
RH159-15	WR159	4.64-7.05	15	1.2	UDR58	Waveguide Flange
RH159-20	WR159	4.64-7.05	20	1.2	UDR58	Waveguide Flange
RH187-10	WR187	3.94-5.99	10	1.25	UDR48	Waveguide Flange
RH187-15	WR187	3.94-5.99	15	1.2	UDR48	Waveguide Flange
RH187-20	WR187	3.94-5.99	20	1.2	UDR48	Waveguide Flange
RH229-10	WR229	3.22-4.9	10	1.25	UDR40	Waveguide Flange
RH229-15	WR229	3.22-4.9	15	1.2	UDR40	Waveguide Flange
RH229-20	WR229	3.22-4.9	20	1.2	UDR40	Waveguide Flange
RH284-10	WR284	2.6-3.95	10	1.25	UDR32	Waveguide Flange
RH284-15	WR284	2.6-3.95	15	1.2	UDR32	Waveguide Flange
RH284-20	WR284	2.6-3.95	20	1.2	UDR32	Waveguide Flange

Waveguide Standard Gain Horn Antennas



Part Number	Waveguide Size	Freq Range	Gain	VSWR	Flange Type	RF Port
		(GHz)	(dBi)	Max		
RH10-1-15	WR10	73.8-110 GHz	15 dBi	1.5	UG387/U-Mod	1.0mm Female
RH10-1-20	WR10	73.8-110 GHz	20 dBi	1.5	UG387/U-Mod	1.0mm Female
RH10-1-25	WR10	73.8-110 GHz	25 dBi	1.5	UG387/U-Mod	1.0mm Female
RH12-1-10	WR12	60.5-91.9 GHz	10 dBi	1.5	UG387/U-Mod	1.0mm Female
RH12-1-15	WR12	60.5-91.9 GHz	15 dBi	1.5	UG387/U-Mod	1.0mm Female
RH12-1-20	WR12	60.5-91.9 GHz	20 dBi	1.5	UG387/U-Mod	1.0mm Female
RH12-1-25	WR12	60.5-91.9 GHz	25 dBi	1.5	UG387/U-Mod	1.0mm Female
RH15-185-10	WR15	49.8-70 GHz	10 dBi	1.5	UG385/U	1.85mm Female
RH15-185-15	WR15	49.8-70 GHz	15 dBi	1.5	UG385/U	1.85mm Female
RH15-185-20	WR15	49.8-70 GHz	20 dBi	1.5	UG385/U	1.85mm Female
RH15-185-25	WR15	49.8-70 GHz	25 dBi	1.5	UG385/U	1.85mm Female
RH19-185-10	WR19	39.2-59.6 GHz	10 dBi	1.4	UG383/U-Mod	1.85mm Female
RH19-185-15	WR19	39.2-59.6 GHz	15 dBi	1.3	UG383/U-Mod	1.85mm Female
RH19-185-20	WR19	39.2-59.6 GHz	20 dBi	1.3	UG383/U-Mod	1.85mm Female
RH19-185-25	WR19	39.2-59.6 GHz	25 dBi	1.3	UG383/U-Mod	1.85mm Female
RH22-24-10	WR22	32.9-50.1 GHz	10 dBi	1.4	UG383/U	2.4mm Female
RH22-24-15	WR22	32.9-50.1 GHz	15 dBi	1.3	UG383/U	2.4mm Female
RH22-24-20	WR22	32.9-50.1 GHz	20 dBi	1.3	UG383/U	2.4mm Female
RH22-24-25	WR22	32.9-50.1 GHz	25 dBi	1.3	UG383/U	2.4mm Female
RH28-292-10	WR28	26.3-40 GHz	10 dBi	1.4	UBR320	2.92mm Female
RH28-292-15	WR28	26.3-40 GHz	15 dBi	1.3	UBR320	2.92mm Female
RH28-292-20	WR28	26.3-40 GHz	20 dBi	1.3	UBR320	2.92mm Female
RH28-292-25	WR28	26.3-40 GHz	25 dBi	1.3	UBR320	2.92mm Female
RH34-292-10	WR34	21.7-33 GHz	10 dBi	1.4	UBR260	2.92mm Female
RH34-292-15	WR34	21.7-33 GHz	15 dBi	1.3	UBR260	2.92mm Female
RH34-292-20	WR34	21.7-33 GHz	20 dBi	1.3	UBR260	2.92mm Female
RH34-292-25	WR34	21.7-33 GHz	25 dBi	1.3	UBR260	2.92mm Female
RH42-292-10	WR42	17.6-26.7 GHz	10 dBi	1.4	UBR220	2.92mm Female
RH42-292-15	WR42	17.6-26.7 GHz	15 dBi	1.3	UBR220	2.92mm Female
RH42-292-20	WR42	17.6-26.7 GHz	20 dBi	1.3	UBR220	2.92mm Female
RH42-292-25	WR42	17.6-26.7 GHz	25 dBi	1.3	UBR220	2.92mm Female

→ Continue

Waveguide Standard Gain Horn Antennas

(Continued)

Part Number	Waveguide Size	Freq Range	Gain	VSWR	Flange Type	RF Port
		(GHz)	(dBi)	Max		
RH51-SMA-10	WR51	14.5-22 GHz	10 dBi	1.4	UBR180	SMA Female
RH51-SMA-15	WR51	14.5-22 GHz	15 dBi	1.3	UBR180	SMA Female
RH51-SMA-20	WR51	14.5-22 GHz	20 dBi	1.3	UBR180	SMA Female
RH51-SMA-25	WR51	14.5-22 GHz	25 dBi	1.3	UBR180	SMA Female
RH62-SMA-10	WR62	11.9-18 GHz	10 dBi	1.4	UBR140	SMA Female
RH62-SMA-15	WR62	11.9-18 GHz	15 dBi	1.3	UBR140	SMA Female
RH62-SMA-20	WR62	11.9-18 GHz	20 dBi	1.3	UBR140	SMA Female
RH62-SMA-25	WR62	11.9-18 GHz	25 dBi	1.3	UBR140	SMA Female
RH75-SMA-10	WR75	9.84-15 GHz	10 dBi	1.3	UBR120	SMA Female
RH75-SMA-15	WR75	9.84-15 GHz	15 dBi	1.2	UBR120	SMA Female
RH75-SMA-20	WR75	9.84-15 GHz	20 dBi	1.2	UBR120	SMA Female
RH75-SMA-25	WR75	9.84-15 GHz	25 dBi	1.2	UBR120	SMA Female
RH90-SMA-10	WR90	8.2-12.5 GHz	10 dBi	1.4	UBR100	SMA Female
RH90-SMA-15	WR90	8.2-12.5 GHz	15 dBi	1.3	UBR100	SMA Female
RH90-SMA-20	WR90	8.2-12.5 GHz	20 dBi	1.3	UBR100	SMA Female
RH90-SMA-25	WR90	8.2-12.5 GHz	25 dBi	1.3	UBR100	SMA Female
RH112-N-10	WR112	6.57-9.99 GHz	10 dBi	1.4	UBR84	N Female
RH112-N-15	WR112	6.57-9.99 GHz	15 dBi	1.3	UBR84	N Female
RH112-N-20	WR112	6.57-9.99 GHz	20 dBi	1.3	UBR84	N Female
RH137-SMA-10	WR137	5.38-8.17 GHz	10 dBi	1.4	UDR70	SMA Female
RH137-SMA-15	WR137	5.38-8.17 GHz	15 dBi	1.3	UDR70	SMA Female
RH137-SMA-20	WR137	5.38-8.17 GHz	20 dBi	1.3	UDR70	SMA Female
RH159-SMA-10	WR159	4.64-7.05 GHz	10 dBi	1.4	UDR58	SMA Female
RH159-SMA-15	WR159	4.64-7.05 GHz	15 dBi	1.3	UDR58	SMA Female
RH159-SMA-20	WR159	4.64-7.05 GHz	20 dBi	1.3	UDR58	SMA Female
RH187-SMA-10	WR187	3.94-5.99 GHz	10 dBi	1.4	UDR48	SMA Female
RH187-SMA-15	WR187	3.94-5.99 GHz	15 dBi	1.3	UDR48	SMA Female
RH187-SMA-20	WR187	3.94-5.99 GHz	20 dBi	1.3	UDR48	SMA Female
RH229-SMA-10	WR229	3.22-4.9 GHz	10 dBi	1.4	UDR40	SMA Female
RH229-SMA-15	WR229	3.22-4.9 GHz	15 dBi	1.3	UDR40	SMA Female
RH229-SMA-20	WR229	3.22-4.9 GHz	20 dBi	1.3	UDR40	SMA Female
RH284-N-10	WR284	2.6-3.95 GHz	10 dBi	1.4	UDR32	N Female
RH284-N-15	WR284	2.6-3.95 GHz	15 dBi	1.3	UDR32	N Female
RH284-N-20	WR284	2.6-3.95 GHz	20 dBi	1.3	UDR32	N Female

Others

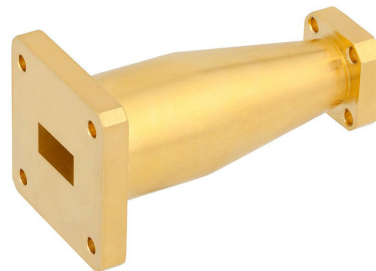
This catalog is designed to provide a general product overview, detailed data sheets can be viewed and downloaded from our website at www.rfone.cn

Most of RF ONE products are RoHS compliant and meet the requirements defined under Directive 2011/65/EU of the European Parliament, or ROHS compliant under exemption. RoHS test reports can be downloaded <https://www.rfone.cn/downloads/rohs-compliance>

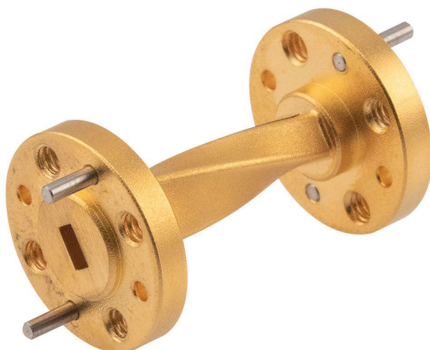
For more and new RF ONE Products, please visit our website or contact us at sales@rfone.cn. Below are some of more products available.



Waveguide Bends



Waveguide Transitions



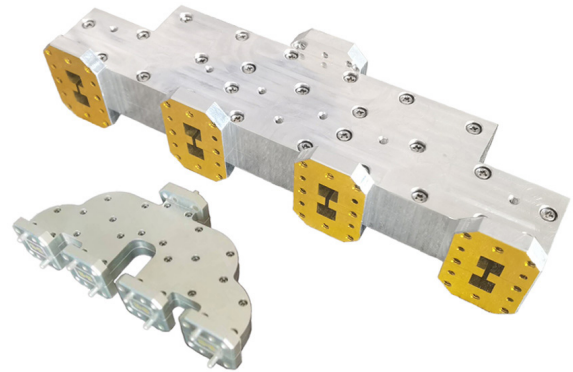
Waveguide Twists



Waveguide Filters



Waveguide Pressure Windows



Waveguide Power Dividers



Waveguide Switches



Waveguide VNA Calibration Kits



Customized Waveguide Components



RF ONE Electronics



Suite 603, Bldg 1, Mingliang Technology Park, Zhuguang North Rd 88, Nanshan, Shenzhen, China, 518055



86-755-86705630 86-755-27757880



sales@rfone.cn



www.rfone.cn www.rfone.com.cn